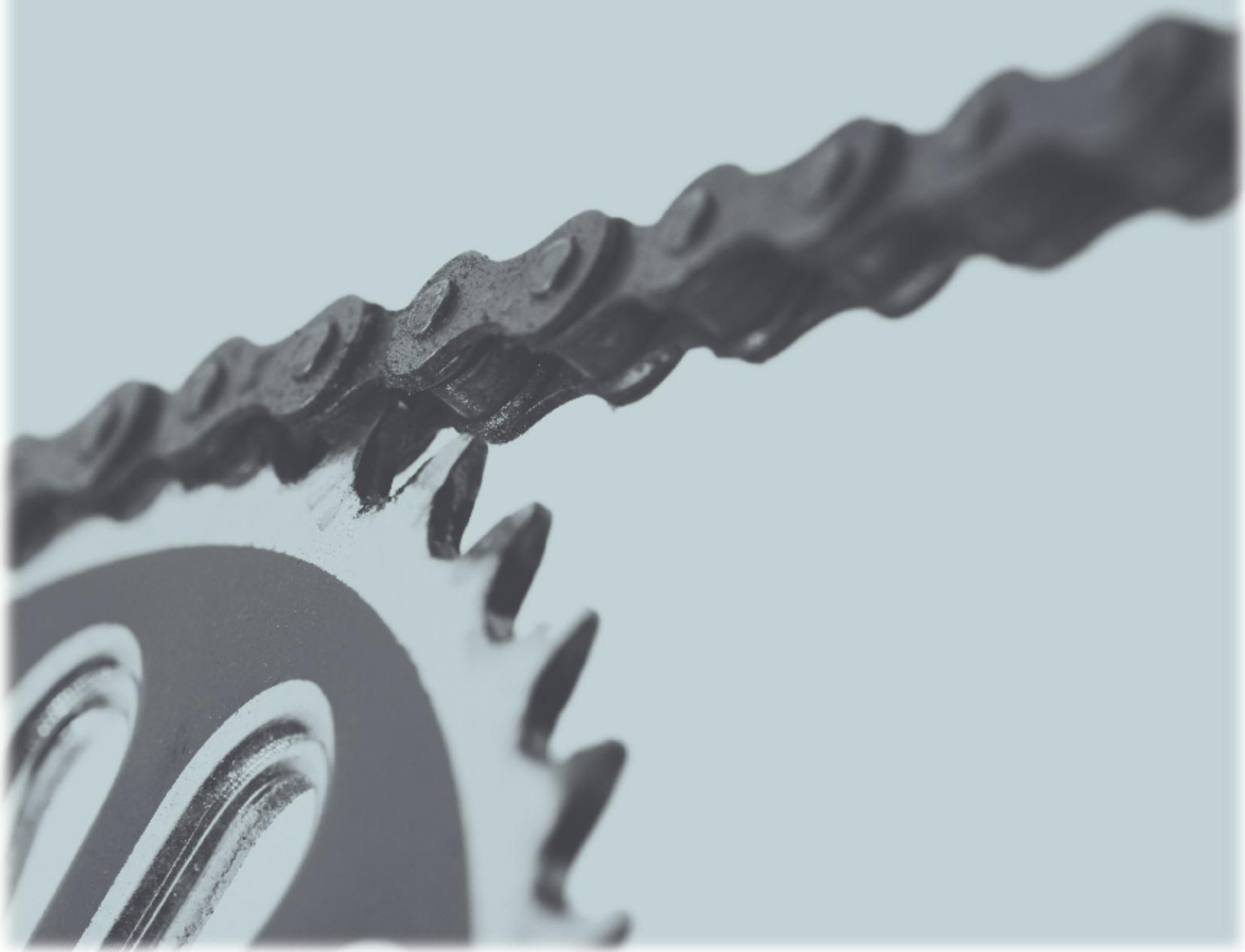


Coca-Cola
zero

 belfast
bikes

Performance Indicators

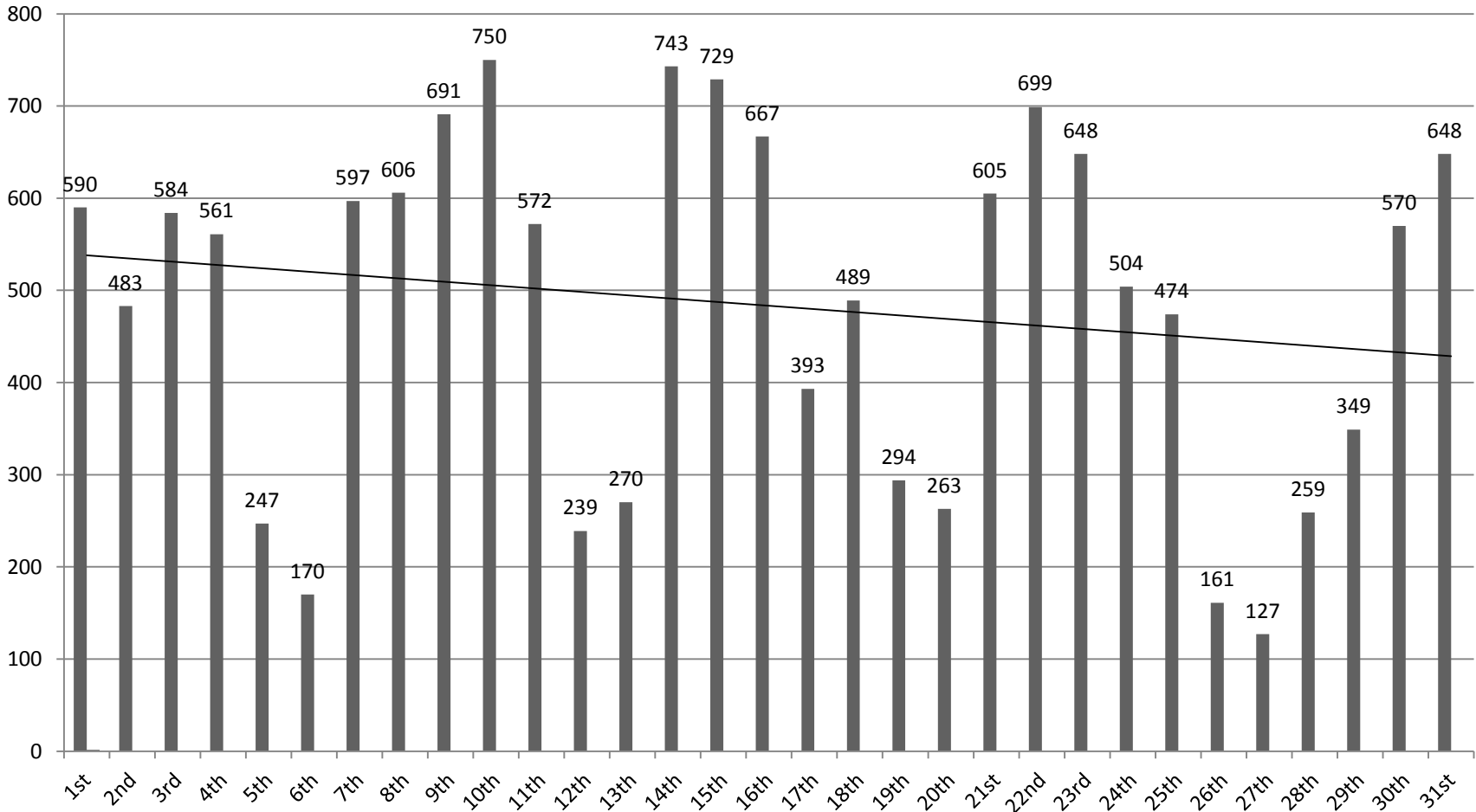
March 2016



March 2016

During the month of March there were 14,334 rentals; (a 3.5% increase on February 2016) rental patterns were mostly affected by weather and commuting. The rental fluctuations are shown below:

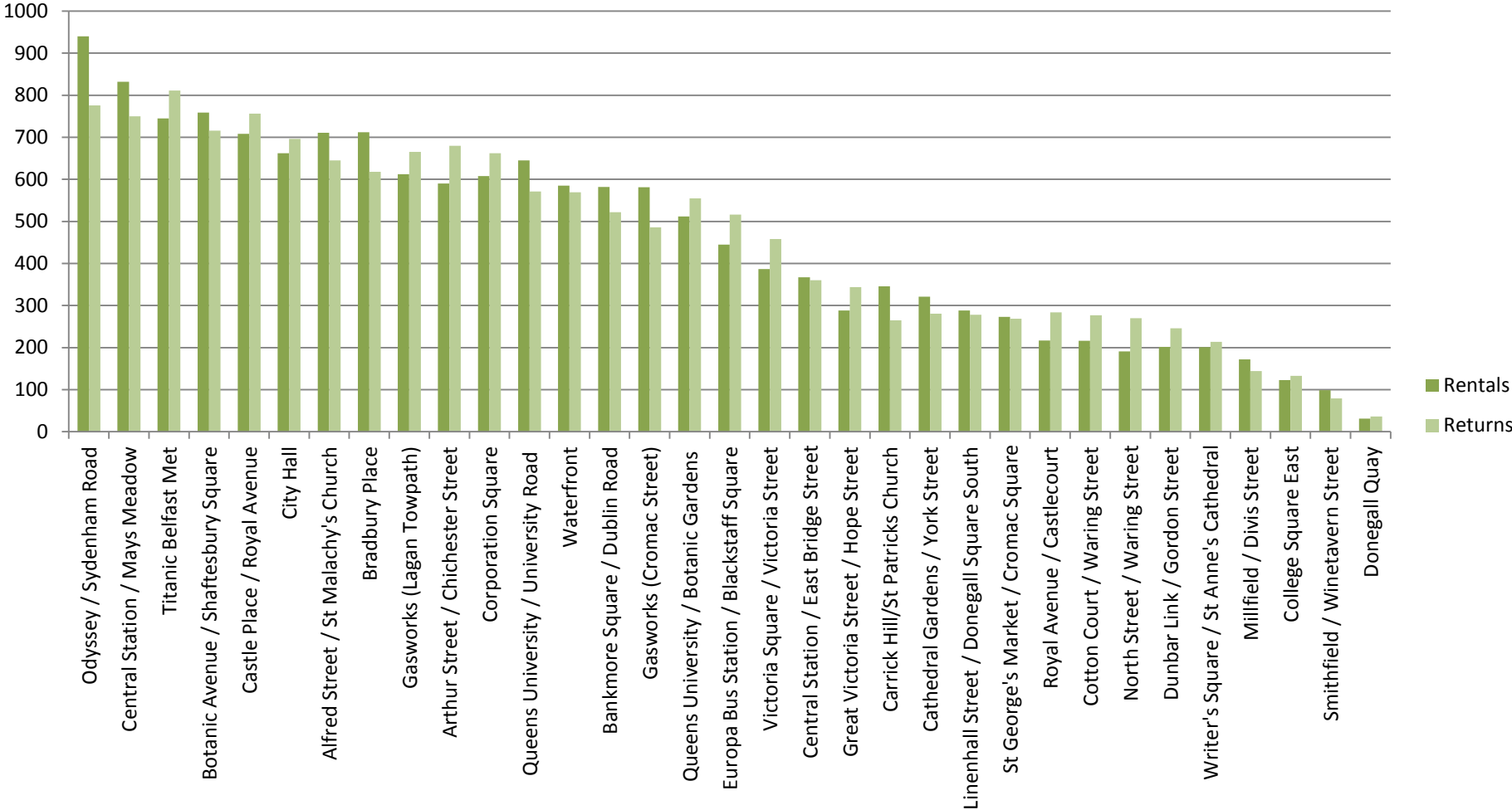
Daily Cycle Hires



March 2016

The most popular stations during the month of March for renting and returning combined were 1) Odyssey 2) Central Station 3) Titanic Belfast Met as shown below:

Rentals and Returns by Station



March 2016

The total rentals to the end of March were 181,359. The monthly fluctuations of rentals from the launch of the scheme are shown below:

Monthly Cycle Hires YTD

